



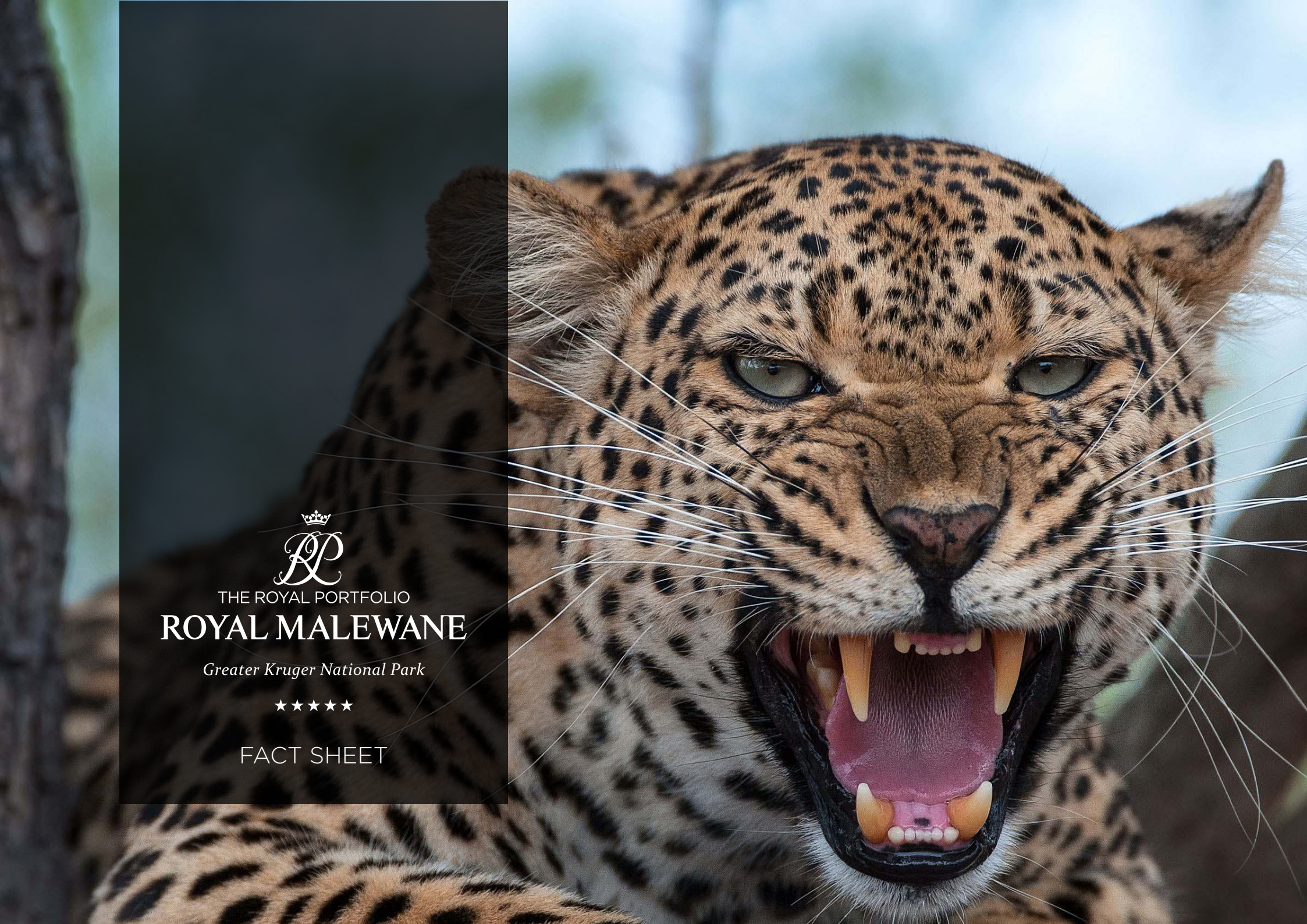
THE ROYAL PORTFOLIO

ROYAL MALEWANE

Greater Kruger National Park



FACT SHEET



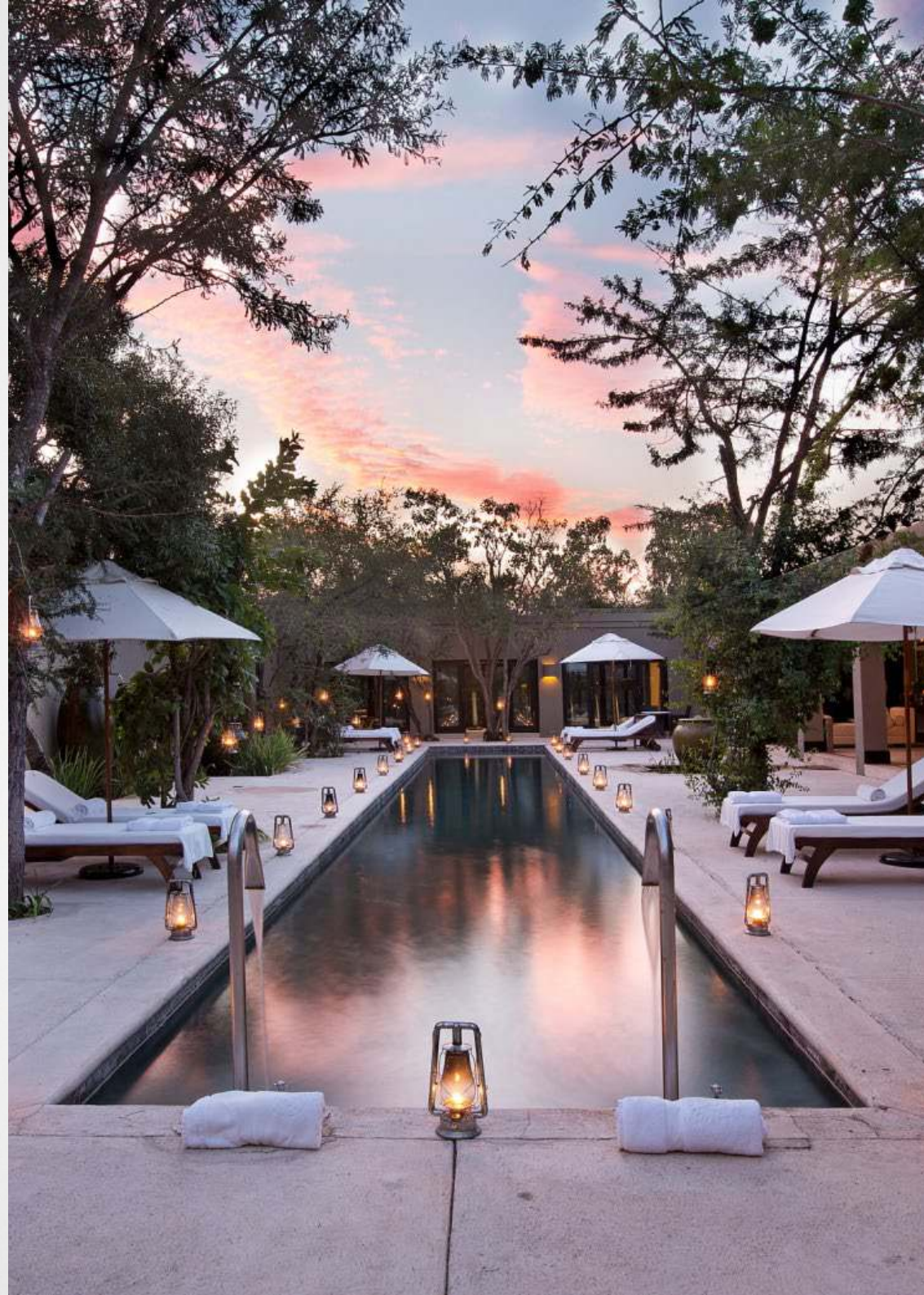
EXPERIENCE THE WILD
HEART OF THE AFRICAN
BUSH IN CLASSIC STYLE
AND ELEGANCE.

A HAVEN OF OLD-WORLD
CHARM AND STYLISH
SPLENDOUR.

Royal Malewane luxury safari lodge in South Africa's Greater Kruger National Park exudes the romance and beauty of a bygone age while offering every modern comfort and convenience. The classic safari experience is unsurpassed with unrivaled game viewing and one of the most qualified guiding teams in Africa. Your exclusive adventure will provide detailed insights into the complex and fascinating ecosystems of the South African bushveld.



ROYAL MALEWANE







ACCOMMODATION

LUXURY AND ROYAL SUITES

ROYAL MALEWANE IS AN INTIMATE AND LUXURIOUS SAFARI LODGE WITH JUST SIX LUXURY SUITES, TWO ROYAL SUITES (WHICH EACH HAVE TWO BEDROOMS), AND AFRICA HOUSE - THE EXCLUSIVE USE BUSH VILLA WITH SIX BEDROOMS. ROYAL MALEWANE CAN ACCOMMODATE UP TO 20 PEOPLE.

LUXURY SUITES

6 x Luxury Suites 65m² (116.5m² with private deck & plunge pool.)

4 of the 6 have four-poster, king size beds.

2 of the 6 can be made into twin beds.

ALL LUXURY SUITES INCLUDE:

- Ceiling fans
- Air conditioners
- Tea and coffee making facilities
- Fully stocked complimentary mini bar
- In-room safes
- Telephones
- Television
- WiFi
- International adapters and hairdryers
- 51.5m² private deck
- 10.8m² private plunge pool
- 11.2m² gazebo
- Fireplace

ROYAL SUITES

BOTH ROYAL SUITES INCLUDE:

- Ceiling fans
- Air conditioners
- Under floor heating
- In-room safes
- Telephones
- Television and DVD player
- International adapters and hairdryers
- WiFi
- Personal desktop
- Lounge, dining area with an open-plan kitchen
- Fully stocked complimentary maxi bar.
- 300m² private deck with plunge pool, Persian rugs, deck furniture
- Fireplace
- Private chef
- Private guide & vehicle
- Personal butlers

All of Royal Malewane's luxurious freestanding suites (Luxury and Royal) are linked to the lodge's reception, dinging areas, library and world-renowned spa via elevated wooden walkways that are illuminated at night.





ACCOMMODATION

AFRICA HOUSE

ACCOMMODATION AT AFRICA HOUSE IS SPACIOUS AND ELEGANT WITH VIBRANTLY ECLECTIC FURNISHINGS. LIGHT FLOODS INTO THE SIX EN-SUITE BEDROOMS, EACH OF WHICH ENJOYS PRIVATE OUTSIDE SHOWER AND DECK. ANTIQUE FURNITURE, CARVED FOUR-POSTER BEDS FROM MOMBASA, PLUSH SILK FURNISHINGS AND PERSIAN RUGS CREATE AN EXOTIC AND LUXURIOUS FEEL.

Sleeps up to 12 guests.

One enters Africa House's central courtyard with its water feature, casitas and covered verandah through a 4.8m tall, double North African front door. The generous living and dining area leads to a covered veranda with outside living and dining areas. Here one can relax on African day beds and cool off in an infinity pool that overhangs a pristine riverine system where game abounds.

- **6 Luxury rooms** in total with private outside showers opening onto a private deck.
- 4 x 29m² Luxury double suites with king size beds and 12m² bathrooms.
- 2 x 35m² Luxury twin suites with 9m² bathrooms.

ALL AFRICA HOUSE ROOMS HAVE:

- Ceiling fans
- Air conditioners
- Underfloor heating
- Lounge furniture
- In-room safes
- Telephones
- International adapters and hairdryers
- Private decks
- WiFi

The teak internal bedroom doors were sourced in Lamu and the carved four-poster beds come from Mombasa. The furnishings can be described as modern African and are eclectic in their origins. Bright coloured silks and leathers have been used, as well as antiques, Persian rugs and objects d'art. All add to the exotic look and feel of this African Villa. Hand-made linen is used throughout Africa House.

The approximate dimensions of Africa House are 680m² - this includes:

- 78m² outside pool deck area
- 50m² covered patio by the pool and deck area
- 100m² open courtyard area
- 40m² covered patio by the courtyard area
- four casitas by the courtyard, each 7m² in size
- 77m² living and dining area

Africa House is a two-minute drive away from the main lodge.





ACCOMMODATION

THE FARMSTEAD

THE FARMSTEAD AT ROYAL MALEWANE CONSISTS OF A MAIN LODGE AREA, THREE LUXURY FARM SUITES, AND THE FARMHOUSE. THE LUXURY FARM SUITES AND THE FARMHOUSE ARE EITHER SIDE OF A CENTRAL LODGE AREA WHERE GUESTS WILL BE ABLE TO ENJOY BREAKFAST, LUNCH, AFTERNOON TEA AND DINNER IN THE ELEGANT AND COMFORTABLE SPACES. AFTER DINNER GUESTS CAN RELAX AROUND THE FIRE PIT ON THE VAST DECK AND REFLECT ON THE DAY'S ADVENTURES. THERE IS A DOUBLE SPA TREATMENT ROOM OFFERING A VARIETY OF INDULGENT TREATMENTS AS WELL AS A GYM.

The Farmstead is offered as four individual units but will be ideal for the exclusive use of up to 14 guests.

- There are three Luxury Farm Suites. Each has a spacious bedroom and an en-suite bathroom with a bath and a shower as well as an outdoor shower. There are large front and back verandahs as well as a beautiful deck and a private pool overlooking the bush where inquisitive wildlife might pay a little visit.
- Children over 10 are welcome in the Luxury Farm Suites.
- The Farmhouse is a three and a half bedroom private villa which is ideal for families or a group of friends. Similar to Africa House and the Royal Suites.
- The Farmhouse has its own private services including a chef, housekeeper and butler.
- Guests will have their own private safari vehicle with a dedicated Ranger and Tracker ensuring the ultimate in luxury.
- There are three main bedrooms as well as a smaller children's room.
- There is a magnificent deck with a large swimming pool flowing out into the bush.
- The total area of The Farmhouse is 636 square metres (6845 square feet) including the vast verandahs and deck.
- Children of all ages are welcome in The Farmhouse.





SPA

THE WATERS OF ROYAL MALEWANE BUSH SPA IS AN AWARD WINNING SPA IN THE HEART OF THE AFRICAN BUSH IN COMPLETE HARMONY WITH ITS NATURAL SURROUNDINGS.

Completely surrounded by the African Bush, the Waters of Royal Malewane Bush Spa is a veritable oasis and an ultimate refuge for those seeking to refresh and restore the mind, body and spirit.

The Waters of Royal Malewane Bush Spa philosophy draws on the healing powers of water. Treatments make use of mineral-rich water, filtered through limestone and granite, and sourced from an underground stream that flows through the reserve.

Positioned around the central courtyard with its 25m heated lap pool, are the three treatment rooms (1x dual and 2x single), as well as a fully equipped gymnasium, a steam room, hot and cold African baths and four pre and post-treatment casitas where guests can enjoy the treatment of their choice.

Additional facilities at the Spa:

- Ladies and gents' changing rooms
- Beverage and snack bar
- Hair salon



ACTIVITIES

GAME VIEWING

Royal Malewane is situated in the Thornybush Private Game Reserve that forms part of the Greater Kruger Area. It boasts an astounding number of species of mammal, including the African 'Big Five' (lion, leopard, elephant, buffalo and rhino), as well as more than 500 species of birds. In addition, there are plenty of striking trees and beautiful wild flowers to delight the eye and satisfy the keenest botanist.

Game viewing at Royal Malewane with our award winning guides and expert trackers are tailored to suit your interests, so you can track your favourite animal or see the birds, flowers or trees that you love most. Royal Malewane is honoured to count the only two master trackers working at a lodge in southern Africa, Juan Pinto and Jonas Mhul, among its ranks.

Each season has something special to offer in terms of game viewing and game drives: the dry, gold-brown winter bush makes for excellent sightings, but the lush green foliage of the summer months brings with it migrant birds and newborn animals.

If you feel like venturing further afield, our Reservations team can arrange the following activities at an additional charge:

- A VISIT TO THE MOHOLOHOLO WILDLIFE REHABILITATION CENTRE
- HELICOPTER FLIGHTS THROUGH THE BLYDE ROVER CANYON, THE WORLDS THIRD LARGEST CANYON AND THE WORLD'S LARGEST WOODED CANYON
- HOT AIR BALLOON FLIGHTS
- CANYON CRUISES
- GOLF AT AFRICA'S MOST EXCLUSIVE GOLF COURSE - LEOPARD CREEK
- HORSE RIDING SAFARIS
- COMPLIMENTARY WALKING SAFARIS



THE MOST QUALIFIED GUIDING TEAM IN AFRICA

Royal Malewane is often referred to in the industry as the Harvard of the Bush. This is because of the guiding team's unyielding passion for learning and their ambition not just to be the best, but to raise the standards of the industry as a whole.

All the game rangers at Royal Malewane hold the highest professional Field Guides Association of Southern Africa (FGASA) qualifications as well as advanced rifle handling certificates. These qualifications ensure that guests enjoy an exceptional game viewing experience – not only while on game drive, but also on foot during bush walks.

At the pinnacle of the professional guiding qualifications are the Special Knowledge & Skills (SKS) Qualifications such as Dangerous Game and Birding. Very few guides in Africa achieve these qualifications which require extensive knowledge as well as technical skills - the team at Royal Malewane have these qualifications in abundance.

The guiding team has over 300 years of African bush experience between them and Royal Malewane is proud to have three of only seven living Master Trackers in the world and the only three working in the entire Greater Kruger National Park.



DINING

The game lodge dining area and lounge overlook the waterhole, often resulting in some spectacular mealtime game viewing.

All meals, local beverages and wines are included. (Excluding French Champagne)

Experience outdoor dining in our boma, where you will be serenaded by frogs and crickets, whilst enjoying deliciously flame-grilled fare under a dazzling canopy of stars.

Our Bush Dinner with lanterns is equally memorable, as braziers blaze high and a wonderful selection of delectable dishes forms an exotic feast of culinary delights that can be experienced whilst being entertained by traditional singing and dancing.

Each meal is accompanied by a handpicked selection of South Africa's finest wines.

Royal Malewane also offers a Kosher Compliant Kitchen. We source the finest Kosher ingredients and prepare orthodox meals of the highest order. (At an extra cost)

Please speak to us about private chefs and any dietary requirements.

WHAT TO BRING:

- Sun cream
- Insect repellent
- Binoculars
- Camera
- Hat
- Sunglasses
- Neutral colours are recommended for game drives (khaki, beige, green, stone, denim blue, black)
- Waterproof jackets and trousers are advisable from September to April
- Gloves, a warm hat, warm jackets or fleeces are recommended from April to August as it can be cold on game drives and comfortable walking shoes if going on a bush walk.



HOW TO GET THERE

TRAVEL BY AIR

From Johannesburg International Airport:

SA Express Airways fly daily to HDA Hoedspruit Airport. Bookings can be made directly with South African Airways, contact by telephone on +27 (11) 978 1111 or via their website at www.flysaa.com.

Road transfers can be arranged by Royal Malewane and take approximately 35 minutes in a comfortable air-conditioned vehicle.

From Cape Town International Airport:

SA Airlink fly daily from Cape Town to KMIA (Kruger Mpumalanga International Airport) in Nelspruit, and HDA (Hoedspruit Airport) Contact South African Airways by telephone on +27 (11) 978 1111 or via their website at www.flysaa.com.

Upon request we can arrange an air transfer with Cesszani charters from KMIA to Royal Malewane's private airfield. The duration of the air transfer is 25 minutes by light aircraft and is not a private transfer. Please note that luggage is restricted to 15kg of soft luggage per person.

Private Charter Flights:

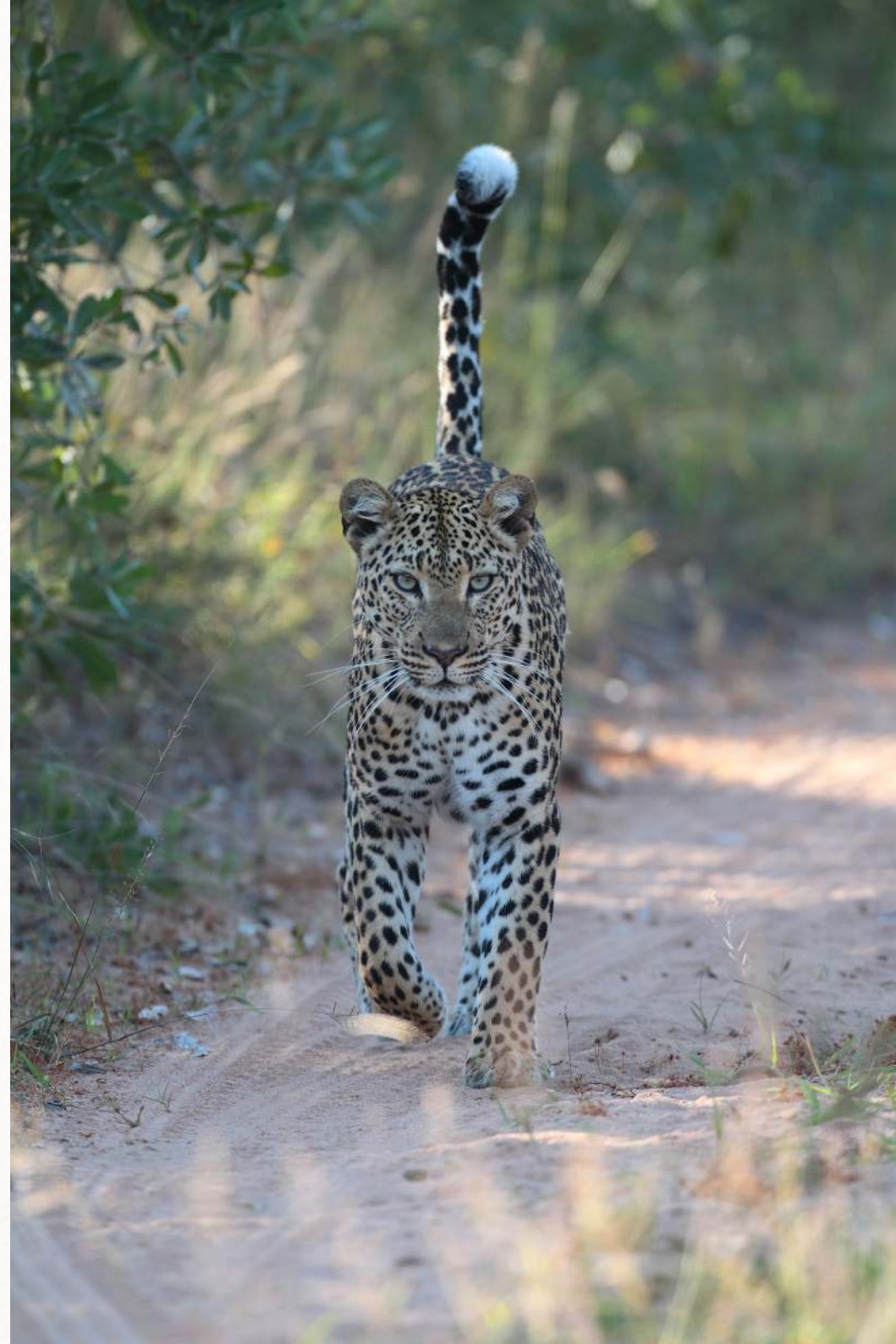
Guests have the option of chartering their own flights directly onto our private airstrip. Central Reservations can assist with booking private charters.

TRAVEL BY ROAD

Guests have the option of travelling to Royal Malewane by road with the advantage of experiencing the small, scenic towns surrounding Royal Malewane and a backdrop of the spectacular Drakensberg mountains. We would be happy to provide Royal Malewane directions depending on where you're coming from.

PLEASE NOTE

1. We have a 24-hour staffed switchboard
2. There is complimentary WiFi throughout the lodge
3. Children under 10 years old are welcome in the Royal Suites, or Africa House - not in the main lodge unless the entire lodge is booked on an exclusive basis
4. Baby-sitting services can be arranged at an additional cost of R100.00 per hour – please contact the lodge directly in this regard
5. Weddings can also be arranged at the lodge – please contact the lodge directly for further information
6. Private safari vehicles can be arranged on request
7. We accept MasterCard, Visa, Diners Club and American Express







THE ROYAL PORTFOLIO
ROYAL MALEWANE

ROYAL MALEWANE

Tel: +27 (0) 15 793 0150

Fax: +27 (0) 15 793 2879

Email: reception@royalmalewane.com

RESERVATIONS

Tel: +27 (0) 21 671 5502

Head Office: +27 (0) 21 761 8292

Email: reservations@trp.travel | headoffice@trp.travel

www.theroyalportfolio.com

ADDRESS

Avoca Road, Off Orpen Gate
Road, Hoedspruit

P.O. Box 1542

Hoedspruit

1380



DISCOVER THE ROYAL PORTFOLIO



BIRKENHEAD HOUSE



LA RESIDENCE



THE SILO HOTEL



PRIVATE RESIDENCES