

A rustic beach banda with a thatched roof made of palm fronds, supported by wooden posts. The interior is furnished with a bed, a table, and chairs. A woman in a teal dress and a wide-brimmed hat stands on the white sand in front of the banda. The structure is surrounded by tall pine trees.

&BEYOND MNEMBA ISLAND

Naturally chic beach bandas

The island offers 12 rustic palm-frond bandas tucked into a tropical forest fringed by a white coral sand beach. Relax and unwind on your own stretch of beachfront.

DISCOVER ZANZIBAR

Beyond Mnemba Island accommodation

BANDA

12 beachside bandas / Maximum 24 guests

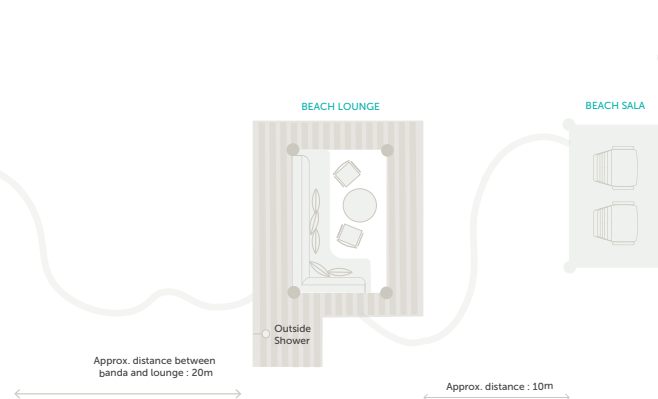
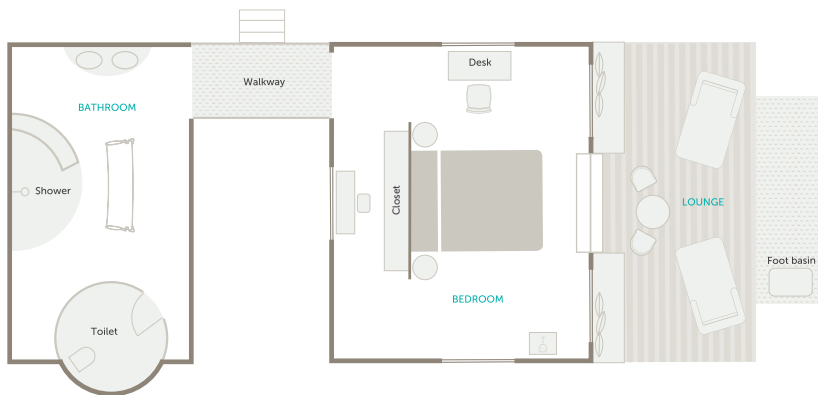


A SPECTACULAR GEM

Mnemba Island offers 12 rustic palm-frond bandas tucked into a tropical forest. A covered walkway leads to a shuttered ensuite bathroom with a glass-beaded shower curtain. Zanzibar is famous for its woodcarvings and the scrolled headboards adorning the beds are created by some of the Island’s most skilled artisans.

ROOM FACILITIES

Room size	94 m ²
Personal bar	Yes
Private verandah	Yes
Air conditioning / heating	No
Overhead fans	Yes
Mosquito nets	Yes
Bath	No
Shower	Yes
Seperate W.C.	Yes
Telephone	In-room telephones are available. Intermittent GSM mobile reception
Hairdryer	Yes
In-room safe	No
Plug type	220V AC (plug points in rooms), Plug type G British – BS 1363
Triple bed option	1 (children 16 years and younger)
Twin bed option	All convertible to double
Private beach sala	Yes



DISCOVER ZANZIBAR

&Beyond Mnemba Island

HOUSE REEF
(INTREPID WATER SPORTS)



12

11

10

9

8

7

6

5

WALKING TRAIL

FAMILY BANDA



BEACH



GUEST ARRIVAL



DINING AREA



BAR



NORTH SIDE DIVE CENTRE



LIBRARY



ISLAND SHOP

4

3

2

1



WALKING TRAIL



SCENIC VIEWPOINT



BEACH



BOAT HOUSE/
SOUTH SIDE DIVE CENTRE



GUEST ARRIVAL

Mnemba ISLAND

