



RP

THE ROYAL PORTFOLIO

THE SILO

HOTEL

FACT SHEET

THE SILO IS A MAGICAL
SPACE TOWERING ABOVE
THE V&A WATERFRONT
SURROUNDED BY THE
NATURAL WONDER OF
SOUTH AFRICA'S
MOTHER CITY.

The Silo Hotel is located in the grain elevator portion of the historic grain silo complex occupying six floors above what will become the Zeitz Museum Of Contemporary Art Africa (MOCAA). The Silo is an extraordinary hotel that sets a new standard in luxury travel.

Located in the heart of Cape Town's V&A Waterfront, the hotel will have unrivaled views of Cape Town.


THE ROYAL PORTFOLIO
THE SILO





ZEITZ MOCAA

Zeitz MOCAA will be a contemporary art museum to rival the likes of the Tate Modern in London, MoMA in New York and Museo Nacional del Prado in Madrid. Zeitz MOCAA is a not-for-profit partnership between the V&A Waterfront and Jochen Zeitz, whose collection forms the museum's founding collection. Zeitz MOCAA will open in late September 2017.

Image courtesy of Mohau Modisakeng and WHATIFTHEWORLD.



HEATHERWICK STUDIO

The exterior of the grain silo building has been designed by Thomas Heatherwick, Founder and Principal of the London-based Heatherwick Studio. Heatherwick Studio was tasked with the transformation of the elevator house and the adjacent storage annex of 6 rows of 7 silos, while carefully retaining its cultural significance and creating a building that will be as synonymous with the Cape Town skyline as the Eiffel Tower is to Paris.

From the outside, the greatest visible change to the building's original structure will be the addition of pillowed glazing panels, inserted into the geometry of the hotel floors, which will bulge outward as if gently inflated. By night, this will transform the building into a glowing lantern or beacon in the harbour.



The Study in the Penthouse

CAPE TOWN

Cape Town is consistently ranked among the Top 10 cities in the world to visit by the likes of Condé Nast Traveler and Travel+Leisure magazine. The 'Mother City', as it is affectionately known, is a colourful and vibrant city surrounded by dramatic mountains and sandy beaches. The magic of Cape Town lies in the collision of natural wonder, diverse cultures, art, design and a thriving food and wine scene.

The Silo Hotel is located in Cape Town's V&A Waterfront and is the ideal base from which to explore all that the city has to offer. At the hotel itself, guests can relax at the spa, take afternoon tea overlooking Table Mountain, quaff champagne, swim in the rooftop pool, work off the city's fine dining in the gym or enjoy a guided tour of the museum.



TOP ATTRACTIONS

- Table Mountain
- Kirstenbosch Botanical Gardens
- Lion's Head
- Helicopter Tour
- Penguins at Boulders Beach
- Chapman's Peak Drive
- Robben Island
- The V&A Waterfront
- Cape Point
- Wine Tasting

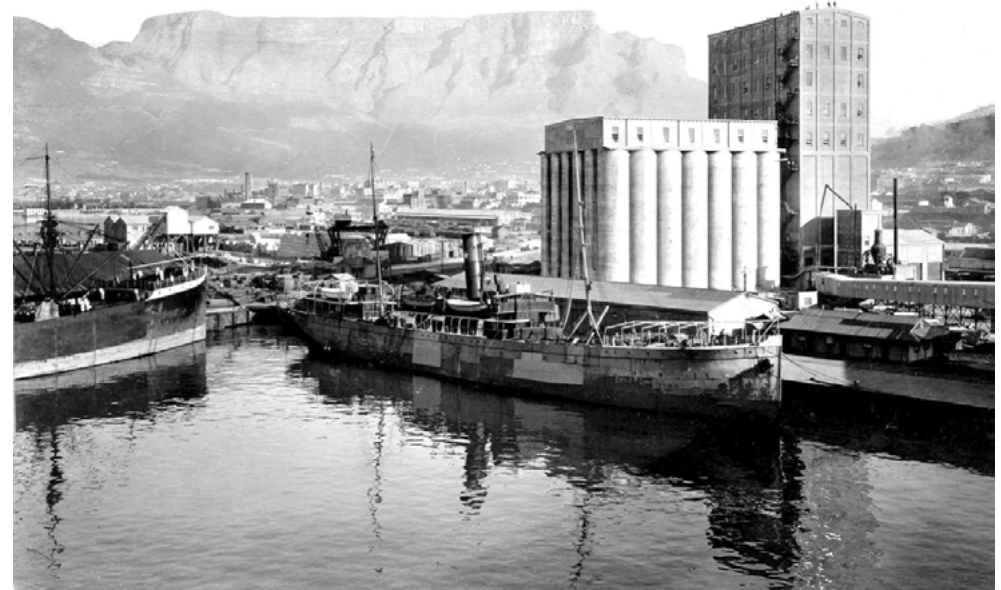


HISTORY

The grain silo complex was the tallest building in Sub-Saharan Africa at 57m when it was opened in August 1924 after 3 years of construction. It closed in August 2001 after nearly 80 years at the heart of South Africa's industrial and agricultural development. The grain silo played an integral role in terms of international trade as an export facility, but it also provided vital infrastructure to South Africa's regional agricultural economies supporting local farming communities while also making a major contribution to the economic activities of Table Bay harbour.

The building has two parts – the elevator tower, where The Silo Hotel is located, which facilitated the mechanical bulk handling of grain, and the actual storage silos themselves. The elevator tower was known as the working house and it served numerous functions. It received grain from the track shed, lifted it to the top of the building by the use of elevators and provided facilities for the grain to be weighed, cleaned, bagged, stored and distributed.

Grain from the smaller, inland 'country elevators' around South Africa was delivered to Cape Town. The first load of maize was received into the grain elevator in Cape Town on the 8 September 1924, and this was followed two months later by the first export from the new elevator – 6,245 tons of maize aboard the SS Willaston destined for Europe, on the 12th November 1924. The last export shipment from the grain elevator was on board the M/V Anangel Wisdom in 1995 and operations ceased in 2001.





A cross-section of the entire grain silo building, which is comprised of Zeitz MOCCA and The Silo Hotel

ACCOMMODATION

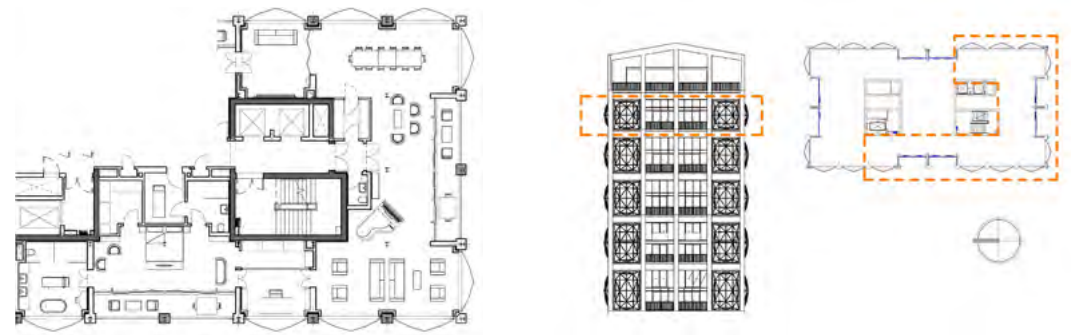


A Deluxe Superior Suite

THE 6 ROOM CATEGORIES ARE BASED ON THE ROOM SIZE AND THE VIEWS. THE ROOMS ARE MORE SPACIOUS VERTICALLY THAN HORIZONTALLY DUE TO THE UNIQUE ARCHITECTURE OF THE SILO AND IN PARTICULAR THE INGENUOUS DESIGN OF THE PILLOWED WINDOW BAYS WHICH ARE ONE OF THE KEY ARCHITECTURAL FEATURES.

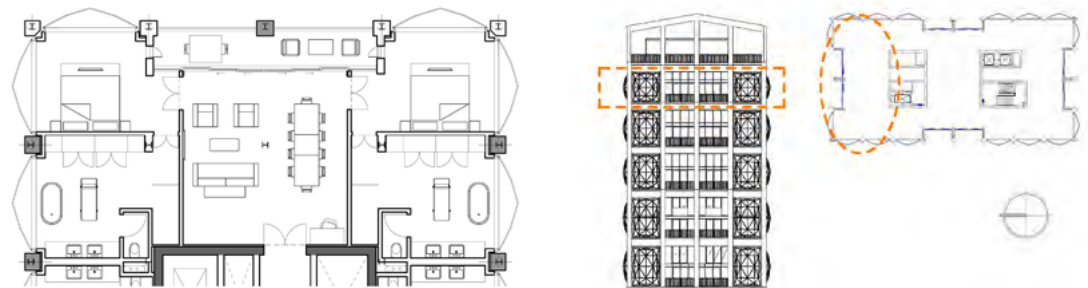
THE PENTHOUSE

The 187m², one-bedroom penthouse is the jewel in The Royal Portfolio's crown located on the top floor of The Silo facing Table Mountain with triple aspect views of Cape Town and a 24m² balcony.



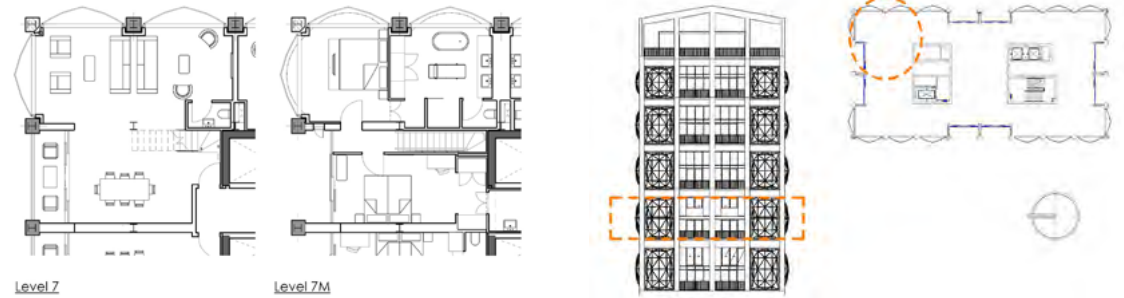
ROYAL SUITES

There are 2, triple aspect Royal Suites facing the Atlantic Ocean, Robben Island and the distant mountains. Each Royal Suite is 132m² and each has 2 bedrooms and a generous balcony.



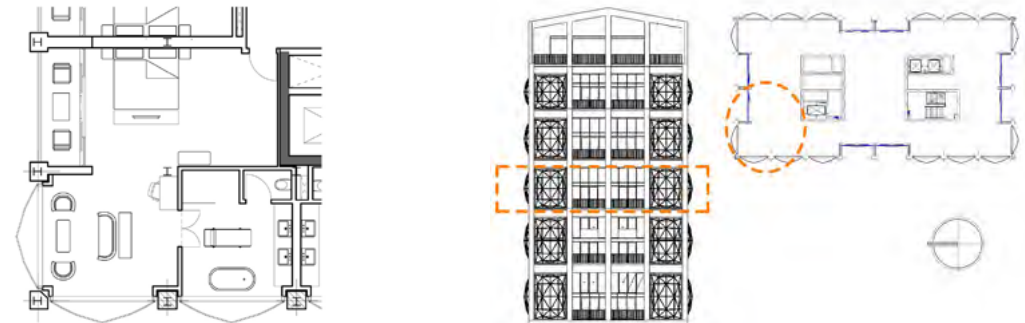
FAMILY SUITES

There are 4 Family Suites on the 7th floor with views over the old harbour and out to the distant mountains or over the V&A Waterfront and Signal Hill. Family Suites range from 111m² to 128m² including a balcony and each has a mezzanine level with 2 bedrooms.



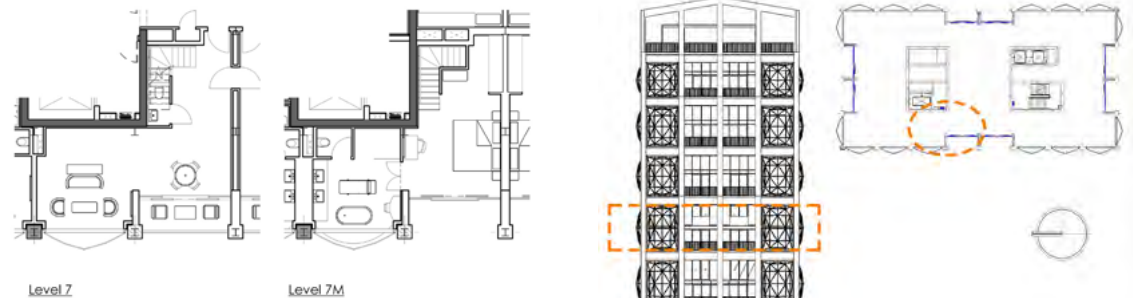
DELUXE SUPERIOR SUITES

There are 7 Deluxe Superior Suites across the 8th, 9th and 10th floors with spectacular 5.5m high pillowed glass windows showcasing the natural wonder of Cape Town. They range in size from 60m² to 67m² including a balcony.



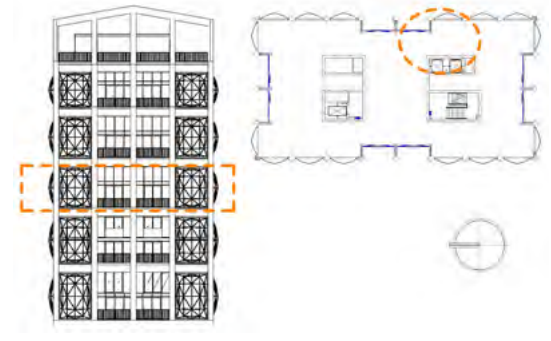
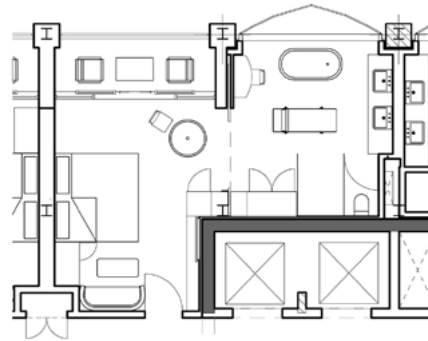
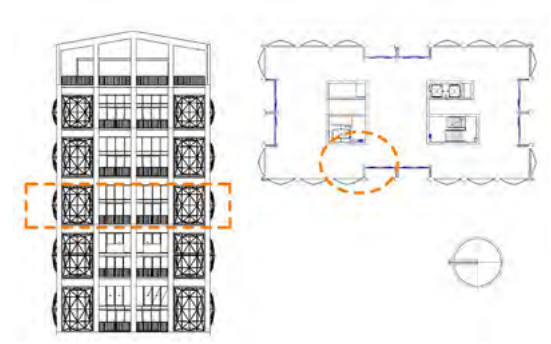
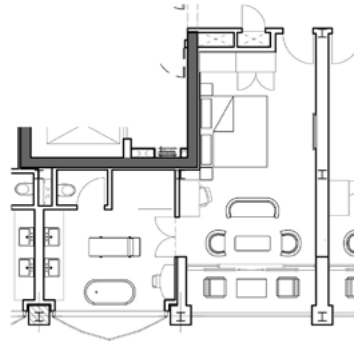
SUPERIOR SUITES

There are 6 Superior Suites across the 6th and 7th floors with either mountain or harbour views. These suites vary between 76m² and 88m² including a small balcony and each has the bedroom on a mezzanine level.



THE SILO ROOMS

There are 8 Silo Rooms with spectacular harbour or mountain views. From 41m² including a balcony.





One of the Magnificent Bathrooms



A Deluxe Superior Suite Lounge



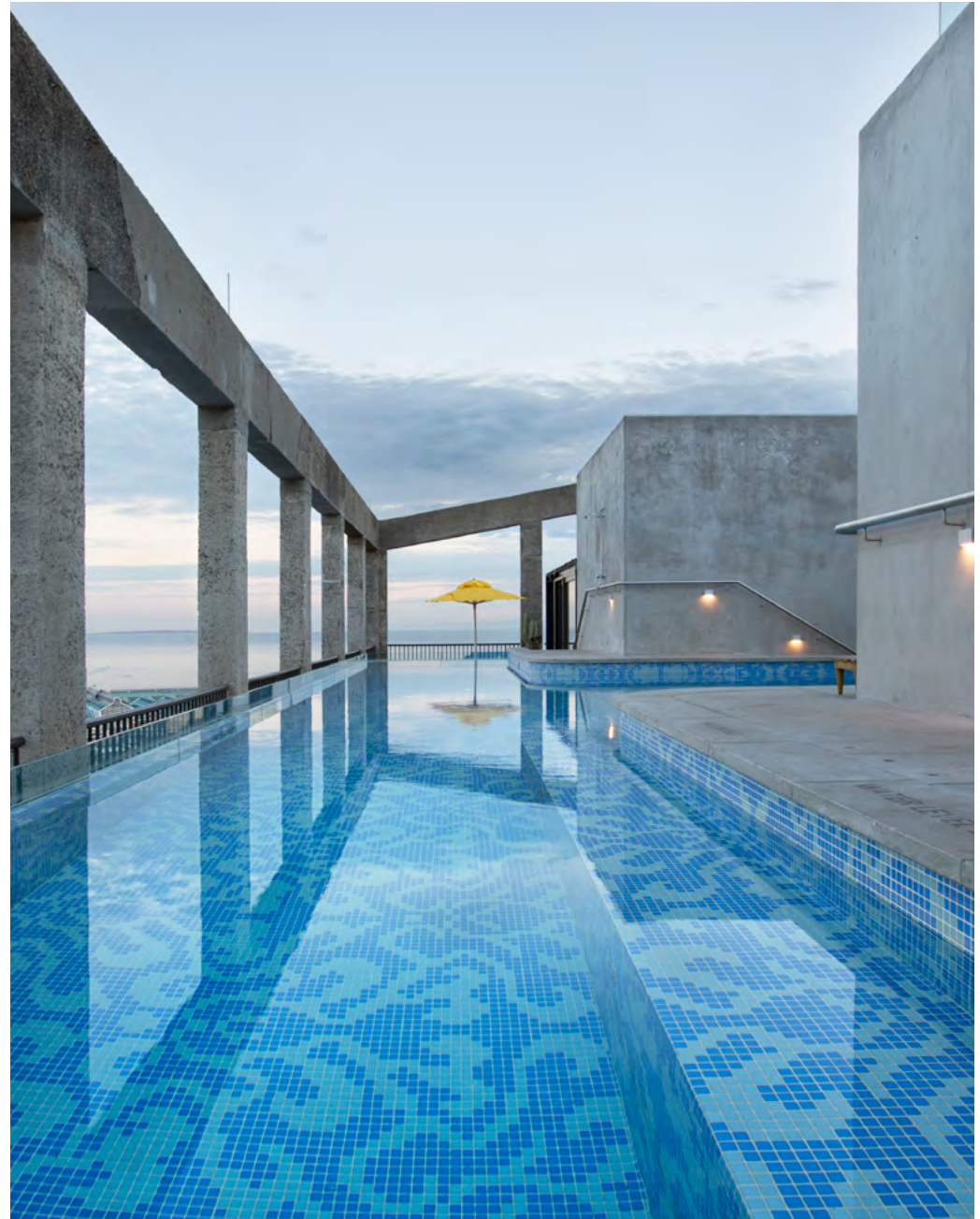
The Dining Room in the Penthouse

FACILITIES

- The Granary Café
- The Willaston Bar
- The Sky Terrace
- Rooftop Restaurant
- Rooftop Swimming Pool
- The Silo Spa (Five Treatment Rooms, Sauna, Change Rooms)
- Gym
- Airport Transfers
- 24 Hour Guest Services
- Laundry Service
- Complimentary WiFi
- Concierge Services
- Private Meeting Rooms / Private Dining Rooms
(The Wisdom Room Seats 22, Rooms 607 & 608 Seat 6 each)
- Underground Parking
- Private Art Gallery

AWARDS & MEDIA

- The New York Times - 8 New Destination Hotels
- Robb Report - The 12 Most Anticipated Hotel Openings
- British Airways High Life - The Check-in Check List
- The Times UK - The Best New Hotels
- Conde Nast Traveller Hot List 2017
- Condé Nast Traveler Readers' Choice Awards: Top Hotels in Africa
- 5 Hot Spots for Art & Architecture Lovers 2018 – Architectural Digest
- The World's Best New Penthouse Suites – CNN Travel





The Willaston Bar



THE ROYAL PORTFOLIO

THE SILO

HOTEL

Hotel Reservations: +27 (0) 21 671 5502
The Silo Hotel General: +27 (0) 21 670 0500
Email: reservations@trp.travel | info@thesilohotel.com
www.theroyalportfolio.com

The Silo Hotel
Silo Square, V&A Waterfront
8001, Cape Town
South Africa





THE ROYAL PORTFOLIO

