



SONG SAA
PRIVATE ISLAND



ISLAND
FACT SHEET



INTRODUCTION

Song Saa Private Island is a heaven of sustainable luxury nestled in the undiscovered beauty of Cambodia's Koh Rong Archipelago. With unique cuisine and stunning sunset views of the Gulf of Thailand, and an array of spa and wellness treatments, Song Saa offers the ultimate indulgence for mind, body and soul. Best of all, our commitment to environmental and community programs means you'll be treading lightly on this special piece of paradise.

Harmony, sustainability and barefoot luxury are the core principles that underpin the design of Song Saa which includes energy-efficient thatched roofing, sandstone reclaimed from the Villa foundation, recycled timber from disused fishing boats, furniture made from driftwood collected from local beaches and coves, and floors made from timber salvaged from old factories, warehouses and demolition yards around Cambodia and Thailand. This is complemented by bespoke hand-crafted furniture made by local artisans and artwork sourced from provincial markets or local artists.

This not only creates a unique experience for our guests through their celebration of the local environment but also contributes meaningfully to conservation and communities, while never compromising on the exceptional standards expected of a high-end resort.

LOCATION

In the warm emerald waters of the Gulf of Thailand, Cambodia's islands nestle like dazzling natural jewels. Song Saa Private Island lies secluded in this magnificent seascape, just 29 km or 45 minutes by speedboat from the port of Sihanoukville. Most of the islands remain undeveloped – deserted oases of virgin rainforests, tropical reefs and glistening white beaches.

In Cambodia's untouched Koh Rong Archipelago, two pristine islands lie side by side. They are known locally as Song Saa – Khmer for 'The Sweethearts'.

The resort spans the islands of Koh Ouen and Koh Bong, connected by a footbridge over Cambodia's first Marine Reserve we have established to safeguard the islands' reefs and marine life including turtles, seahorses and exotic species of tropical fish.



ACCOMMODATION

It features 24 luxury Over-Water, Jungle and Ocean View villas built with sustainable materials and with the deepest respect for the natural environment. Open-plan living spaces and outdoor decks with daybeds allow guests to enjoy the island's magnificent seascapes and rainforests.

All Villas feature king size bed, twin vanity bathroom, oversized sunken bath tub, wardrobe, writing desk, fully stocked personal bar, 40 inch flat screen TV's, Bose surround sound system, Ipod and android docking stations, High speed wifi, lounge area, outdoor shower, sundeck with day bed, poolside shower, private pool (26m²) and a team of dedicated Guest Experience Ambassadors.

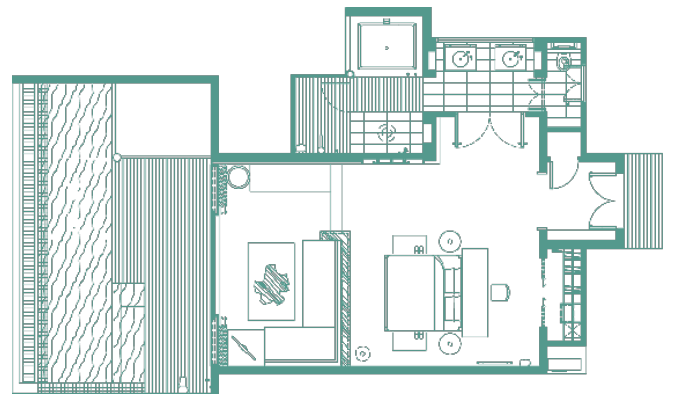


JUNGLE VILLAS

Nestled in the rainforest canopy, overlooking the open ocean, with your choice of sunrise or sunset views. Pure privacy.

One-bedroom – Each of the seven Jungle Villas measures a total of 135m² with private pool (26m²) including the sun lounger.

Two-bedroom – Each of the two Jungle Villas measure a total of 300m² and private pool (33m²). Additional features include a kitchen, with a mojito making station, indoor dining (maximum 8 seats).



Jungle One-Bedroom Villas



Jungle Two-Bedroom Villas



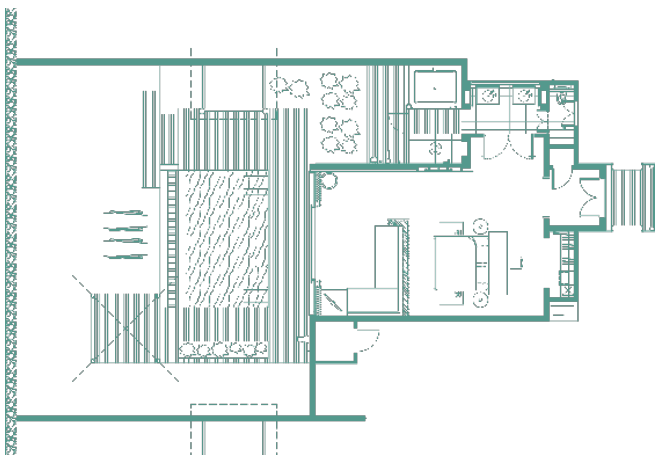


OCEAN VIEW VILLAS

Spectacular views of the open ocean from the privacy of your own beach and private sala.

Relax on your daybed and listen to the sea lapping or enjoy an intimate dining experience in your sala on the water's edge.

Each of the seven one-bedroom Ocean View Villas measure a total of 200m² with private pool (26m²) including the sun lounge. Additional features include private dining gazebo and private elevated beach (87m²).



Ocean View Villas



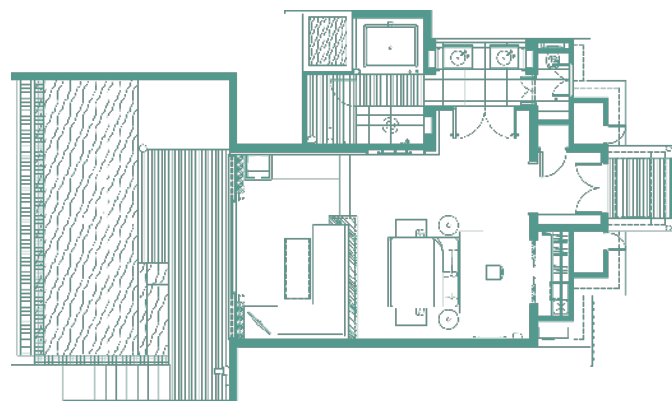


OVERWATER VILLAS

Step into the ocean from your private terrace, or quietly watch the sun slip into the sea from the pool.

One-bedroom – Each of the six Overwater Villas measure a total of 135m² with private pool (26m²) including the sun lounger. Additional features include lounge area with glass floor to view marine life and stair access to ocean.

Two-bedroom – Each of the two Overwater Villas measure a total of 300m² and private pool (33m²). Additional features include kitchen, mojito making station, indoor dining for 8 guests.



Overwater One-Bedroom Villas



Overwater Two-Bedroom Villas

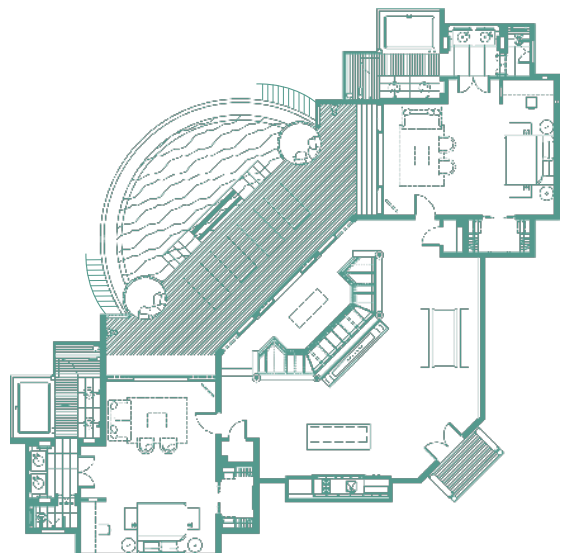




ROYAL VILLA

This two-bedroom Royal Villa is perched over the water in one of the most discreet and exquisite locations on our island.

The spacious villa measures a total of 300m² and private pool (33m²). Additional features include a kitchen, with a mojito making station, indoor dining (maximum 8 seats), and lounge area with glass portholes to ocean, and a dedicated Guest Experience Ambassador during your stay.



Royal Villas



DINING

Dining at Song Saa Private Island is a sumptuous experience, where the focus is on fresh, sustainable and 80% locally sourced food. Every dish is inspired by the local environment and celebrates the natural gifts of the islands.

Vista Overwater Restaurant & Lounge - Sitting just off the island's shoreline and surrounded by our house reef and gazetted marine reserve, this incredible space seats an intimate 36 in the main venue as well as 12 on the open air deck.

For events, a combination of covered and open air seating for 58. The restaurant offers an à la carte menu for breakfast, lunch and dinner featuring contemporary Western and Cambodian cuisine. For the Lounge, enjoy natural juices, cocktails or Champagnes while the sounds of the archipelago drift like music around you. Seating for up to 34 on the open air deck and 14 undercover in the bar area. 7:00am to 11:00am for breakfast, midday 'till 2:30pm for lunch and 7:00pm till 10:00pm for dinner*.





Driftwood Bar & Kitchen - Located on the beach, Driftwood has a relaxed and rustic feel, offering pizza and tapas-style menus, as well as the perfect spot for a cold beer, a chilled glass of wine or one of our signature cocktails. Daily seating for up to 30 or event seating up to 36 undercover with a further 18 in the open air space by the waters edge. Open from 11:00am till 8:00pm and dinner* on certain nights.

Pool-side Dining - Relax pool side where you can enjoy offerings from the Vista or Driftwood menus', informal seating up to 14 around the pool where, most importantly, you won't have to move an inch. For something special there is also the opportunity for this relaxed outdoor space for up to 26 persons. 11:00am till 6:00pm for finger food and 9:00am till 9:00pm for drinks.



In-Villa Dining - In villa dining is informal and served in your lounge for jungle and overwater villas. For Ocean View the option of the dining sala can be set up in optimum weather conditions. Two bedroom villas have the choice of indoor or outdoor dining for 6 - 8 persons.

Destination Dining - Choose one of our secluded hideaway spots for a private dining experience designed entirely for you and your tastes. Select from the following locations for Dinner or for Lunch by arrangement.

- **Beach** - Dine with the sound of the waves and the stars above. 30 - 50 persons depending on the season.
- **Pool Side** - Enjoy local cuisine with your feet in the water. Up to 14 in the water or 12 on the ocean deck.
- **Driftwood Deck** - Hidden through a garden pathway to the open deck looking out onto the bay. Up to 8.
- **Dining Room** - Located at the end of our Chef's Garden, seating up to six.
- **The Point** - Romantic location surrounded by the ocean, ideal for couples, seating up to 4.

Dinner* - each night we alternate our dining venue on the island to ensure you have the most inspired experience we can offer.

Please note: Destination Dining Venues and Menus may carry an additional charge, depending on your reservation benefits and certain venues are guided by specific menu offerings.



POOL

Large infinity edge swimming pool with a large deck furnished with sun loungers and day beds.

BEACH

A lovely stretch of powdery white sand extends along the shoreline dotted with lounge chairs for relaxing.

ISLAND BOUTIQUE

An exclusive island boutique featuring designer labels from around the world, luxury body care products, and local art works.



SANCTUARIES

At Song Saa, we strive to embrace the Buddhist tradition of 'metta bhavana' or loving kindness. We are inspired by the Buddhist principle of reverence for all beings and aim to follow the tradition of offering blessings to others. In our Island's spa we are committed to use sustainable and natural products from artisanal producers that also benefit local communities either here in Cambodia or other parts of the world. Treatments are designed to encourage our philosophy: Stillness, Healing & Blessings.



SONG SAA FOUNDATION

Central to Song Saa's vision is the commitment to conservation and community programs which ensures the protection of the natural environment and simultaneously supports the needs of the local people. The Song Saa Foundation, an official body is committed to this work in the region. The work of the Foundation includes:

- The creation and management of Cambodia first dedicated marine reserve.
- The initiation of Cambodia's first island-based solid waste management programme.
- The support of local livelihoods, through the promotion of an organic agriculture scheme.
- The coordination of the largest health and education programme on any of the Kingdom's islands.
- The initiation of projects addressing the local impacts of climate change.

DISCOVERY CENTRE

An interactive and educational space for guests to learn more about Song Saa's conservation and community work. We offer a range of unique activities that allow guests to experience the beautiful environment and people of the Koh Rong Archipelago.





GETTING THERE

From Phnom Penh – From Phnom Penh International Airport (PNH) to Sihanouville international airport (KOS) - approx. 40 mins flight or directly drive approx. 5 hours from Phnom Penh to Sihanouville Port, including a rest break.

From Siem Reap – From Siem Reap International airport (REP) to Sihanouville international airport (KOS) - approx. 45 mins flight.

From Ho Chi Minh – Cambodia Angkor Air operates scheduled one-hour flights from Ho Chi Minh City to Sihanouville five times a week.

From Bangkok – From Don Mueang International Airport (DMK) Bangkok Thailand to Sihanouville international airport (KOS) - approx. 1h 40mins flight.

Speedboat Transfer Service – Our 45minute shared speedboat operate three times per day by prior arrangement. Please kindly noted that the boat only operates in daylight hours. Private boat transfers from the Port are also available by prior arrangement.

Helicopter Service – Please contact reservations for details.

*Remarks: You could arrange a local driver for airport transfer to the port (20-30 minutes) through the resort reservations.

TIME ZONE

Song Saa has a special time we call “Island Time” where we set the clocks forward an hour to allow guests to catch sunrise at a more rested time. The resort’s boats, used for arrivals and departures, run on mainland time schedules in order to sync with real-time flights.

CONTACTS

Sales: sales@songsaa.com | +855 23 989 011

PR: pr@songsaa.com | +852 2343 2388

Reservations: reservations@songsaa.com | +855 23 989 012

Website: songsaa.com