

An aerial photograph of the Nyungwe House in Rwanda, captured during the golden hour of sunset. The scene is dominated by a dense, lush green forest that covers the surrounding hills and valleys. In the center-left, a large, flat, green field, likely a tea plantation, is visible, with a winding dirt path cutting through it. Several traditional-style buildings with dark, gabled roofs are scattered throughout the landscape, some nestled within the forest and others on the edge of the tea field. The sky is a dramatic mix of deep orange, yellow, and dark brown, with soft clouds catching the low sun. The overall atmosphere is serene and majestic, highlighting the natural beauty of the region.

*One & Only*

NYUNGWE HOUSE

*Rwanda*







**IN A FOREST RICH WITH FLORA THAT HAS THRIVED FOR MILLIONS OF YEARS, WITHIN THE LUSH GREEN EXPANSE OF A WORKING TEA PLANTATION, ONE&ONLY NYUNGWE HOUSE IS A TRANSFORMED, IDYLIC ECO RETREAT OFFERING ONCE-IN-A-LIFETIME EXPERIENCES IN THE HEART OF MAGICAL RWANDA.**

Trek to encounter the rare Mangabey monkey, lively in its own playground, as majestic mahoganies, delicate orchids, and exotic butterflies magically surround you. Soak up the knowledge of local elders who share the secrets of survival in this remote jungle environment. Then unravel within our beautifully re-imagined spaces, where every creature comfort is at your fingertips. From evening cocktails by the crackling fire pit and gastronomic feasts on the elevated deck, to soothing indigenous therapies in the warm jungle air and relaxing on your private deck before the theatre of nature, this is Africa as you've never seen her before.

# RESORT INFORMATION

## AN UNRIVALLED LOCATION

Imagine a place immersed in natural beauty. Remote; one-of-a-kind; where the world's best-kept secrets become yours to behold. Where once-in-a-lifetime moments are curated especially for you, inspired by the land, the wildlife and the people, and where every creature-comfort is at your fingertips. This is a journey few will ever take. Welcome to One&Only Nyungwe House.

- One&Only Nyungwe House is set on the edge of the Nyungwe Forest in Rwanda's mountainous southwest. Part of a working tea plantation, her roots are well-established, while her recent transformation provides a distinctly modern energy with incredible design and every comfort you could ever need or desire.
- We believe the adventure begins on the journey itself. That's why our transfers are so much more than transfers. Our charismatic hosts welcome you personally at Kigali International Airport, and take you on a breathtaking journey in a luxury SUV, or a scenic helicopter ride, equipped with every creature-comfort. Stopping at remarkable points of interest along the way, with refreshments and a beautifully prepared picnic, the surprises begin before you've even touched down at the resort.

## PRIVATE SPACES

Every newly-transformed room and suite has been architecturally designed to blend seamlessly with the unique landscape, respecting the environment and perfectly framing the best aspects of Nyungwe's natural beauty. With an emphasis on indoor and outdoor living, you remain consistently connected to your surroundings, as extended furnished balconies open up to lush flora, with mesmerising aspects over the working tea plantation and forest beyond.

- 22 luxury rooms and suites situated in eight stunning wooden villas.
- All designed to frame nature, with exceptional views of the Nyungwe Forest.
- Newly-extended private decks offer a secluded haven to watch wildlife.

- Interior design comprising locally-made textiles and artwork is inspired by the talent and beauty of Rwanda.

## ONCE-IN-A-LIFETIME MOMENTS

No one has walked in your shoes, nor dreamed your dreams, so we curate a completely bespoke itinerary to make your passions and interests come to life. With expert local guides and visiting international specialists, every discovery is illuminated by a wealth of knowledge and first-hand stories, beautifully enhanced with local artisan produce.

- Delight in active adventures, such as mountain biking, canopy-walking, and trekking.
- Feel the thrill of up-close wild encounters, from incredibly rare primates and reptiles to butterflies, exotic birds and indigenous flora.
- Enjoy heart-warming interactions with local people as you discover secrets of their survival, their crafts, cuisine, customs and more.
- Socialise with like-minded worldly travellers in a myriad of beautiful settings; around the fire pit, the idyllic infinity pool and at daily aperitif gatherings.
- Soak up unforgettable moments, designed especially for you, from private dining on our elevated deck with flavours from the chef's own garden, to al fresco couples' treatments at our brand-new spa.

## DINING WITH ALL FIVE SENSES

Savour an array of authentic local and international cuisines, created with fresh organic ingredients from our chef's garden.

- From stunning sunrise breakfasts that prepare you for a day of discovery, to leisurely all-day à la carte brunches served in bed or out amongst the wilderness, nutritious and indulgent options are always on the menu.
- Lunches are often served 'on-the-go', but our picnics are truly something to behold. With beautifully-set tables and delicious creations, they're just another reason to say 'wow'.

- From tempting nibbles around the fire pit to sociable feasts amid the flora and private dinners on our elevated deck, you'll never have the same experience twice, here or anywhere else on the planet.

## WELLNESS

Being at one with nature sits hand in hand with an ethos of personal wellness. Whether you wish to enhance your healthy lifestyle, or delve into a new world of spiritual and physical development, there's no better place to practice wellness than here.

- Savour mouth-watering, organic, garden-to-plate menus designed with exceptional nutritional value.
- Unwind with al fresco yoga on our elevated deck before inspiring mountain vistas.
- Work up a sweat in our gym carved from nature's own landscape.
- Indulge in holistic individual and couples' therapies, inspired by local tradition and botanical, in our brand-new spa.

## GIVING BACK

At One&Only Nyungwe House, the conservation of our environment and local communities is of utmost importance. Along with our resort's sustainable operating procedures, we encourage you to contribute, as much as you like, and in whatever way you feel comfortable.

- Getting your hands dirty: working the land, building a fence, or tending to animals.
- Sharing is caring: bringing resources or toys or passing on your valuable knowledge – from children's education to medicine, art and engineering – we can arrange opportunities for you to help the communities flourish.
- Invest in handmade objects: purchasing unique local products that fund charitable initiatives





ONE&ONLY SPA



PRIVATE DINING



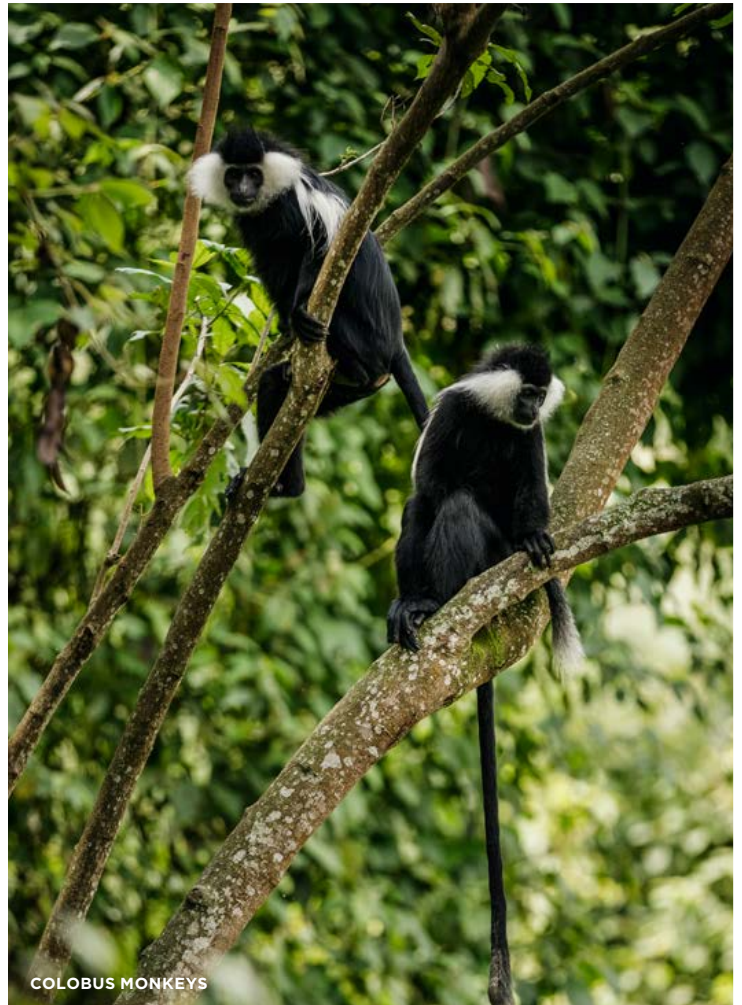
JUNGLE INFINITY POOL



FOREST SUITE - BEDROOM

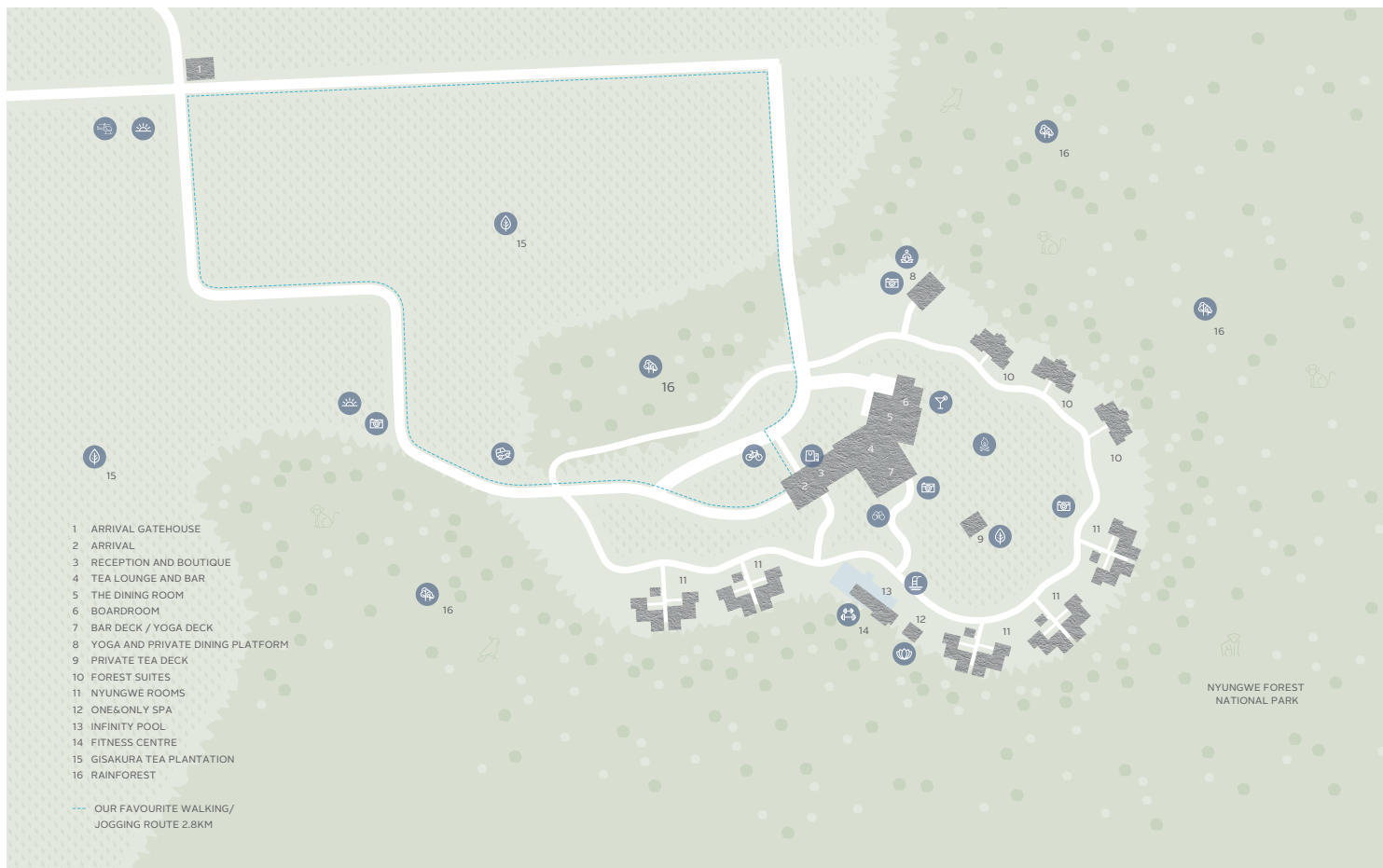


PRIVATE BALCONY



COLOBUS MONKEYS





## REGIONAL SALES OFFICES

### ASIA PACIFIC

Kerzner International  
 Unit 1202, Floor 12  
 Allied Kajima Building  
 138 Gloucester Road  
 Wan Chai, Hong Kong  
 T: +852 2896 3332  
 InfoHKG@kerzner.com

### BRAZIL

On Request Marketing  
 Rua Pascal, 600/ 32  
 04616-002 São Paulo - SP Brasil  
 T +55 11 34424553  
 contato@onrequest.com.br

### CENTRAL EUROPE

Kerzner International  
 Goethestrasse 27  
 60313 Frankfurt  
 Germany  
 T: +49 69 297 2907-0  
 InfoCE@kerzner.com

### GCC AND MIDDLE EAST

Kerzner International  
 P.O. Box 41976  
 Riyadh, 11531  
 Kingdom of Saudi Arabia  
 T: +966 11 263 2081  
 GCCSales@kerzner.com

### RUSSIA AND CIS

Kerzner International  
 Office C, 31st Floor, Tower 'A'  
 12, Presnenskaya Embankment  
 Moscow, 123317  
 Russian Federation  
 T: +7 499 6438247  
 InfoRU@kerzner.com

### UK AND SOUTHERN EUROPE

Kerzner Internawtional  
 150 Brompton Road  
 Knightsbridge  
 London, SW3 1HX  
 United Kingdom  
 T: +44 203 900 4402  
 UKSales@kerzner.com

### UNITED STATES

Kerzner International  
 1325 Avenue of the Americas  
 28th Floor, New York, NY 10019  
 United States of America  
 T: +1 212 786 6254  
 USASales@kerzner.com

oneandonlynyungwehouse.com